



Alphabet Soup: ITC's, OECECN, and the MCOECCN

Bruce Hawkins, CEO
Andrew Tompkins, CPO
Management Council of the
Ohio Education Computer Network



Creation of the OECN

- In the late 70's the State Auditor created the USAS requirements to enable uniform fiscal reporting.
- Prior to USAS, each school district was "on its own" for fiscal operations.
- Local software and processing capabilities varied greatly.



Creation of the OECN

- Large or affluent districts might have their own data processing department.
- Some schools leased computer equipment and software directly from system integrators (e.g. NCR).
- Others purchased services from local banks, businesses, universities, etc.



Creation of the OECECN

- This variability made auditing more difficult and time consuming.
- Reporting capabilities varied greatly from district to district.
- Systems controls could not always be verified – some lacked proper audit trails or the software could not be audited.

Creation of the OECN

- The development of USAS rules caused a mild panic in the treasurer community:
 - Third-party providers (banks, etc) were not willing to make needed upgrades.
 - Districts could not afford to buy new software.
 - How were they going to comply with USAS?





Creation of the OECN

- The Ohio Education Computer Network was created by the Ohio Legislature in 1979.
- Reference ORC 3301.075 and OAC 3313.7
- Initially established to assist districts in meeting requirements of the Uniform School Accounting System.



What is an "ITC"

- Information Technology Center.
- Formerly known as "Data Acquisition Sites" (DA Site) and also "A Site".
- An ITC provides information technology services to school districts, community schools, JVS/career & technical, and educational service centers (ESC's).



Creation of the OECN

- The original law allowed for no more than 27 regional sites – currently 23 ITC's.
- The ITC's serve approximately 800 entities and 1.4M students.
- ITC's are organized as either:
 - Consortia under ORC 3313.92
 - Council of Governments (COG) under ORC 167

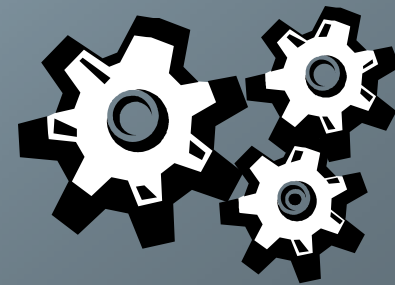


Consortia

- ORC 3313.92 allows for school districts to create a partnership (a consortia) to resolve mutual needs.
- One of the members of the consortia is designated as fiscal agent.
- The fiscal agent provides all accounting, purchasing, and personnel services for the consortia.

Council of Governments

- A “COG” under ORC chapter 167 allows for one or more governmental entities to join together to form a new legal entity.
- A COG can have its own treasurer, make its own purchases, hire staff, and have debt obligations.





Types of Services

- Core services all ITC's provide:
 - Accounting, payroll, and inventory
 - Student processing (e.g. report cards, scheduling, attendance, transcripts)
 - INFOhio (library automation)
 - Internet access and wide-area networking
 - EMIS support



Types of Services

- Additional services some or all ITC's provide:
 - Video and multi-media services
 - LAN support (district in-building networks)
 - Telephony and VoIP support
 - Data-based decision making, grade book software and parent access portals
 - Staff development



ITC's are Regional

- ITC's are "owned" by the districts they serve.
- ITC's do not have pre-defined service areas (boundaries). Membership is voluntary but contractual.
- Each ITC is governed by a locally selected board representing the interests of their districts.



ITC Funding

- Approximately 20% (or less) of funding comes from the State Budget:
 - Line 200-426 (OECN)
 - Line 200-446 (EMIS)
- The remaining 80% (or more) comes from local sources.





ITC Funding

- Each ITC provides for its own unique operational requirements:
 - Facilities costs
 - Hardware costs & hardware maintenance
 - Software licensing & maintenance
 - Personnel
 - Services



ITC Funding

- Factors that influence ITC costs:
 - Regional cost of business factors
 - Number of districts, buildings, teachers, and students
 - Size of staffing
 - District demands
- The budget of any ITC is controlled and approved by its member districts.



ITC Funding

- Why do fee differences exist?
 - SLA or “uptime” demands.
 - Urban vs. rural salary market factors.
 - Number of districts, buildings, teachers, students, etc. will influence hardware and staffing needs.
 - Staff coverage – eight, ten, or twelve hour staffing window, or need for on-call staffing.



ITC Funding

- There are essentially three fee models used by ITC's:
 - Fee for Service or total cost of ownership model: Each service is priced independently and districts can select needed services.
 - Equitable division of costs: Every district pays a share of the total costs of providing all services.
 - A combination of these two.



ITC Funding

- Fee for service:
 - The ITC calculates the cost to provide the service (e.g. staffing, hardware, software, supplies, overhead).
 - The cost is generally allocated on a per-student basis.
 - Districts offered a “menu” of service options.



ITC Funding

- Equitable distribution:
 - The ITC determines its total annual budget.
 - The total cost is divided by some factor (number of students, number of buildings, etc).
 - Each district pays their “share” of the cost.



ITC Funding

- Combination:
 - Some ITC's might have a "base" fee for "standard" services (non-optional).
 - Plus offer additional or optional "for fee" services.
- Other examples:
 - Internet connection fee – based on speed and number of buildings, etc. Also known as a "bundled service".
 - Some services might be a flat fee.



ITC Funding

- All ITC's offer the same "core" services as required by the OAC.
- However, no two ITC's are *identical* in terms of services, budgets, fee structure, number of districts, or other local cost factors.
- The local ITC board and its membership determine the services and approve the fees.



ITC Funding

- How can we be sure ITC services represent a value for districts?
 - Districts own the ITC's and they approve all services, the budget, and the fee structure.
 - Districts can move between ITC's. Quality and cost are market driven.
 - ITC's know and understand their market.



ITC Funding

- All ITC member districts pay their “fair share” of the operational costs.
- Generally speaking, larger districts pay a larger amount than smaller districts.
- Historically we have not “lost” districts due to cost issues – districts have remained loyal to the OECN.



Formation of the MCOECN

- ITC's are regional in scope.
- The Management Council was created *by the ITC's* to represent them on a state-wide basis.
- The MCOECN was originally created in the mid-80's.
- The MCOECN is organized as a COG.



MCOECN – ITC Relationship

- The MCOECN does not have any authority or operational control over the ITC's.
- If anything, it is the opposite – the ITC's own the MCOECN and determine our goals and strategy.
- The MCOECN works on behalf of the ITC's.



MCOECN – ITC Relationship

- The MCOECN endorses a program of continuous improvement for all ITC's
- However, the MCOECN does not have “inspection rights” for any ITC.
- We will provide operational consulting to ITC's when asked by the ITC Director or its governing board.

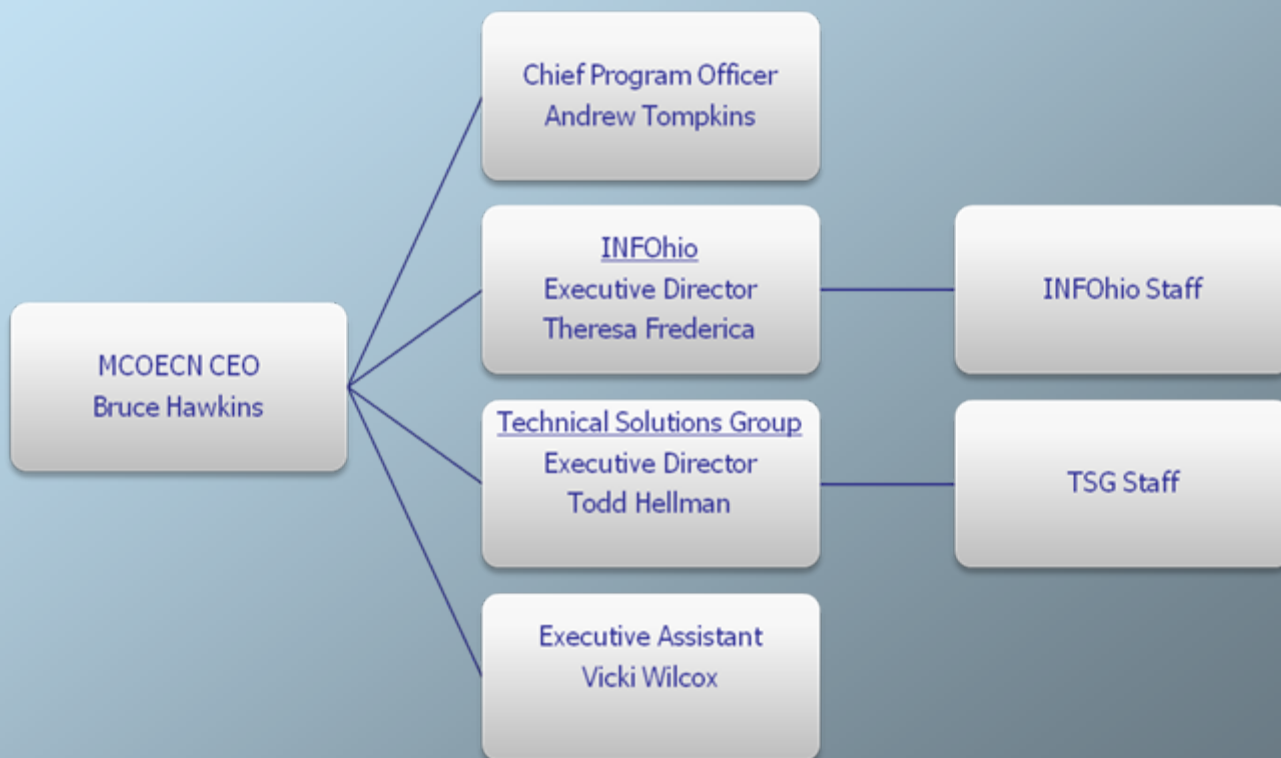


MCOECN Organization

- The MCOECN is governed by a 10-member Board of Trustees.
 - Five ITC Directors and five school Superintendents
- Trustees are elected by geographic region and serve three-year terms.
- The board meets at least seven times per year.



MCOECN Employee Organizational Chart





MCOECN Operational Organizational Chart

MCOECN Board of Trustees

MCOECN CEO

Bruce Hawkins

Chief Program Officer
Andrew Tompkins

INFOhio Governing Advisory Board

TSG Advisory Board

DASL Advisory Board

Executive Assistant
Vicki Wilcox

INFOhio Executive Director
Theresa Frederica

Technical Solutions Group Executive Director
Todd Hellman

DASL Executive Director
Bill Swartzmiller

INFOhio Staff

TSG Staff

DASL Project Teams



MCOECN – ODE Relationship

- The Ohio Department of Education does not have any direct authoritative control over the MCOECN.
- ODE and the MCOECN work cooperatively on issues of mutual interest.
- The MCOECN assists ODE in communications to ITC's and districts.



MCOECN – ODE Relationship

- The MCOECN does not receive subsidy funding from ODE, but some programs do receive subsidy (INFOhio).
- The MCOECN may receive funding as fees for services.
 - For example, the MCOECN manages the Internet (ISP) service on behalf of the Ohio K-12 Network, and ODE purchases a base amount as a subsidy to Ohio Schools.



OECECN Infrastructure

- The physical network is known as the Ohio K-12 Network.
- It is a cooperative partnership between the OECECN, ODE, eTech Ohio, large urban districts, and the Ohio Supercomputer Center (OARnet).



OECECN Infrastructure

- The Ohio K-12 Network backbone consists of high-speed fiber connectivity to all 23 ITC's and seven large urban districts.
- The physical fiber network is provided and managed by OSC.
- The logical network and routing capabilities are managed by eTech Ohio.
- Connections to the backbone were paid up-front for 10 year leases.



OECECN Infrastructure

- The new Ohio K-12 backbone was originally called “Third Frontier Network” (TFN).
- This name is now politically incorrect. The new name is OSCnet (Ohio Supercomputer Network).
- Presently 28 out of 30 sites are connected, with the remaining three sites in progress of being completed.



OECECN Infrastructure

- Currently most sites are running the ATM protocol across OC-3 (155Mb) circuits.
- Over the next 18 months sites will transition to the Ethernet protocol running over Gigabit Ethernet (1000Mb/sec) connections.



OECECN Infrastructure

- Ohio has one of the best educational network backbones in the nation.
- The investment in OSCNet at the state level has directly impacted capabilities and costs for districts:
 - More backbone capacity without increasing costs.



OECN Infrastructure

- The connection between ITC's and districts varies by ITC.
- All schools have a minimum connectivity of 1.5Mb/sec (T1 or greater).
- Some ITC's have implemented fiber-based networks which might run anywhere from 10Mb/sec up to Gig-E speeds.



OE CN Infrastructure

- Each district is required to meet specific connectivity requirements in order to qualify for a connectivity subsidy.
- The current subsidy is \$3,000 per building per year.
- This is provided directly to districts that meet the requirements and apply for funding.



Fiber Connectivity

- The choice (and cost) of implementing fiber falls to each ITC and their member districts.
- The MCOECN has called for state support to implement fiber connectivity to every district.
- We have not been successful in gaining additional funding for this endeavor.



Fiber Connectivity

- However, fiber capabilities are spreading to many regions of the state.
- The cost of high-speed fiber-based services are becoming competitive with older alternatives.
- OIT was able to include metro-Ethernet services in the most recent SOMACS agreement.
- Fiber will be predominant moving forward.



OECN Infrastructure

- The MCOECN negotiates a group purchase on Internet (ISP) services on behalf of the Ohio K-12 Network (*more on our purchasing program later...*)
- The Ohio K-12 Network is currently consuming approximately 1.9Gb of ISP services per month.
- No charges for intra-state traffic.



Core Services

State Supported Services

<u>Fiscal</u> <i>Budgetary</i> <i>Payroll</i> <i>Inventory</i>	<u>Student</u> <i>Scheduling</i> <i>Attendance</i> <i>Report cards</i>	<u>EMIS</u>	<u>INFOhio</u> <u>Library</u> <u>Automation</u>	<u>Connectivity</u> <u>and</u> <u>Internet</u> <u>Access</u>
---	---	-------------	---	---

Software at ITC's

- All ITC's use the state Fiscal software developed by the State Software Development Team (SSDT)
 - Accounting (budgetary)
 - Payroll
 - Inventory
- EMIS reporting software also developed and supported by the SSDT.





Software at ITC's

- All ITC's use library automation software acquired from Sirsi via the INFOhio Library Automation program.
- Seven ITC's (plus four large districts) use the eSIS student services package from AAL.
- Sixteen ITC's use the DASL student services software which is owned by the MCOECN.



Software at ITC's

- There are several other software packages in varying use at ITC's:
 - Grade book and parent access software
 - Document management solutions
 - Web site management solutions
 - Human resources solutions



Software Development

- The State Software Development Team (SSDT) develops and maintains the “state” software under contract with ODE.
- There is no license costs to districts for use of state software.
- ITC’s may charge a fee to districts for the cost of *supporting* state software.



Software Development

- Distributing Software Updates:
 - Updates to state software are made available via the SSDT and are announced via email.
 - Full support is provided via a helpdesk run by the SSDT.



Software Development

- Software changes:
 - The State Software Advisory Committee provides guidance and direction on enhancements to state software.
 - In general, the SSDT continues to work on web-based user interfaces for all state software programs.
- Trailing presentation is from the SSDT. Please contact them for more info.



Software Development

- Why might a district –not- use state software:
 - Availability of a fiscal package included with their student software.
 - No history of any relationships with an ITC.
 - USAS/USPS software enforces stricter controls on data.



Data Controls

- The State Auditor's Office performs a SAS-70 Audit of state software.
- The audit confirms availability of necessary controls within the software.
- See the NWOCA SAS-70 Audit for further details.



Data Controls

- Do ITC's look for errors in the data?
 - It is not a requirement, but many ITC's will assist districts in identifying errors.
 - In general, it is the district's responsibility to insure their data is accurate.
 - ITC's will forward any error reports from ODE to the district.



ITC Training Programs

- ITC offer training programs for their services.
- Most ITC's provide update events at key time periods such as end-of-year or EMIS reporting times.
- Training and support assistance can be group events or one-on-one as needed.



ITC Training Programs

- Training is voluntary – some districts take advantage more than others.
- All ITC's track support requests via a shared help-desk system (CA USD).
- ITC's can relate support requests to training needs and identify districts that need higher levels of assistance.



MC·TSG

- The MCOECN VAR (Value Added Reseller) program was developed to assist ITC's and districts in acquisition of hardware and software.
- The program was recently revised and is now known as the "Technology Solutions Group" or "MC·TSG".



MC·TSG

- The MC·TSG has oversight provided by a 10-member advisory board made up of ITC Directors.
- The Management Council recently hired Todd Hellman as Executive Director of the MC·TSG program.
- Todd will be responsible for the overall re-design of the program in its transition from “VAR” to “TSG”.



MC·TSG

- While similar to other group purchasing programs, the MC·TSG is somewhat unique in focusing only on technology products and solutions.
- In addition to volume purchasing, the MC·TSG will also provide consulting resources and staff development opportunities.



MC·TSG

- Example Products:
 - Microsoft
 - Adobe
 - FileMaker
 - ProgressBook
 - Turn-it-In
 - HP
 - StorServer



MC·TSG

- Example Partners
 - Educational Resources
 - JourneyEd
 - INS
 - Daytona Storage



MC·TSG

- Savings example:
 - ISP Services – MCOECN conducted an RFP to purchase Internet access.
 - Previous cost: \$128/Mb per month.
 - New price: \$45/Mb/month.
- The reduced price has enabled the network to purchase almost three times as much bandwidth for same funding.



MC·TSG

- We believe we can leverage the volume of technology purchasing by ITC's and Ohio schools to drive down pricing and improve overall service and support.
- Revenue exceeding expenses will be invested in technology resources for Ohio's schools.



ITC Disaster Recovery

- Each ITC participates in a SAS-70 audit process to insure proper technical controls exist within their operations.
- Each ITC is required to create and test a disaster recovery plan.
- The MC·TSG recently provided a disaster planning workshop for MCOECN members.



ITC Disaster Recovery

- The consultant-lead workshop provided a proven plan generating methodology for sites to follow in creating their individual plans.
- The MC·TSG is also coordinating efforts for a group purchase of backup storage capacity and off-site recovery facilities.



ITC Disaster Recovery

- It will take some time for sites to complete this planning process and test their new plans.
- Sites will continue to leverage the strength of the OECN to improve services (like DR) at a cost that districts can afford.



The following 30 slides were provided as reference by the State Software Development Team (SSDT). For further information please contact Duane Baker (Baker@nwoca.org).



QUESTIONS?

www.mcoecn.org

State Software Update and Futures

Review of Recent Changes and
Future Directions

Dave Smith
State Software Development Team

Overview

- Review of Recent Changes:
 - USAS
 - USPS
- Planned Changes:
 - USAS
 - USPS
- Review (Demo?) of Recent Webapps

USAS Changes

- Fund Types for FY2007
 - All programs use Fund Type on Cash Accounts
 - If blank, defaults to Blue Book as previously
- DELACT Project-to-Date
 - Will flag Cash for deletion if only PTD amounts remain
 - CASHSCN can delete Cash and underlying accounts

USAS Changes

- Programs retired:
 - APE
 - RCPROC
 - RECEDT
 - VENSCN
- Replaced by Web Interfaces

USAS Changes

- And then Re-hired!
 - APE, RCPROC, RECEDT, VENSCN
- Reasons:
 - Performance complaints (Software, Network, browser, etc)
 - User complaints: Missing Features, Too slow
- Status:
 - Not rescheduled for retirement, yet
 - No other retirements planned
 - Migration Plan Still Running
 - Green Screens will go away
 - Slowed down forced retirements

USAS Changes: Webapp

- Improved printing
 - PDF output, customizable by ITC or District
 - Batch printing
- Improved User Interface
 - Reduced requirement for using mouse
 - Improved tabbing order
 - Expanded query options
- Performance improvements
 - Reduce/eliminated “hangs”
 - Less load on ITC server
- User Preferences from OPTSCN

USPS Changes

- OBES is now ODJFS
 - All programs say “ODJFS”
 - Programs renamed
- Better Support for “Email Direct Deposit Notices”
 - Separate flag on BIOSCN to indicate Email notices
 - Does not just depend on email address
 - Can use MASCHG/MASENOT
 - Now all employees can have email address, regardless of how direct deposit notices are sent

USPS Changes

- Support for “Designated Roth”
 - DEDNAM flag for “Regular Deductions”
 - Flag values for contributions to 401K or 403b
 - Prints in Box 12 of Form W2
- PAYDED
 - Can use Employee ID instead of SSN for submission and report
 - Check with Financial Institution before using
- USPLOAD/DEDSCN
 - Can load error adjustments
 - Error Adjustments and Board Adjustments can be imported from spreadsheet

USPS Changes

- Credential ID Implemented for EMIS
 - One time load available
 - Certificated Employees
 - PERDET/USPEMX prompts for which field to use as EMISID:
 - SSN, Employee ID, Credential ID
 - Correct choice depends on Student Information System
 - Must use ID that SIS uses for “Course Master” records

USPS Changes

- DEDNAM:
 - Flag to suppress SSN from DEDRPT
 - Can print Employee ID, SSN or neither on DEDRPT
 - SSN not necessary are DEDRPT, unless deduction company requires it on report

Planned Changes: USAS

- Primary Focus on Migration:
 - More Web Interfaces:
 - Remaining Transactions & Cash Accounts
 - Finish Functionality:
 - “Split” items on PO's and Requisitions
 - Support for 3rd Party printing (Signing, archiving, etc)
 - Print Options:
 - PDF, Excel & Custom
 - “Raw” exports for third-party printing functions
 - But will support pre-printed laser forms

Planned Changes: USAS

- “Elimination” or Simplification of 4502
 - Auditors don't need most of it
 - ODE deciding which parts they need with EMIS
 - Ancillary data entry will might be removed
 - May be required to use Web-GAAP
 - Even if not using rest of Web GAAP
 - Just upload Cash from USAS
 - Generate Cash Basis Statements only

Planned Changes: USAS/SSWAT

- SSWAT has been static
 - Based on older technologies
 - Difficult to enhance
- Re-implementing User Interface
 - Re-writing interface using modern tools
 - Will look similar to USAS Web
 - Will be faster and allow for future enhancements

Planned Changes: USPS

- Implement Hours Worked Tracking
 - SERS requiring districts to certify hours worked for retiring employee
 - USPS does not track hours worked
- Likely Implementation:
 - Flag on JOBSCN to indicate if hours included for retirement
 - New “MISC” pay type to count hours towards retirement
 - Over Time will count towards retirement
 - FYTD hours tracked on retirement records
 - FY history stored permanently for each employee

Planned Changes: USPS

- Easier posting of taxable fringe benefits
 - New Pay Types in UPDCAL
- Allow leave units by type
 - Different units for each leave time
 - i.e. Sick in days while vacation in hours
- Implement New Deduction type:
 - Board Paid but taxable to employee

Planned Changes: USPS

- Continued development of web interface:
 - Quick Entry for attendance
 - EMIS-Only Entry Screen
 - More record types
- No planned retirements of green screens

USAS Web - Account Query - Mozilla Firefox

File Edit View History Bookmarks Tools Help

Back Forward Reload Stop Home

http://devel.ssdn.nwoca.org/usasweb/budgetAccou

Google

Home Logout

- Home
- Accounts
 - New Budget
 - Query Budgets
 - New Revenue
 - Query Revenues
- AP Invoices
- Checks
- Configuration
- Purchase Orders
- Receipts
- Refunds
- Requisitions
- Vendors
- Admin
- Utilities
- Help
- Logout

Functions

Find Clear

Use * as a wildcard to represent any character in fields flagged with *

Budget Account Query

	Fund	Func	Obj	SCC	Subj	OPU	IL	Job
Account # :	<input type="text"/>	<input type="text"/>	<input type="text"/>	<input type="text"/>	<input type="text"/>	<input type="text"/>	<input type="text"/>	<input type="text"/>
Description:	<input type="text" value="Salary*"/>							
Status:	Active <input type="button" value="v"/>							
Maximum Accounts Displayed:	<input type="text" value="50"/>							

Fund	Func	Obj	SCC	Subj	OPU	IL	Job	Description	Remaining Balance	Available Percent
001	1100	111	0000	000000	006	01	000	Salary - 1st grade teachers	\$13,531.41	21
001	1100	111	0000	000000	006	02	000	Salary - 2nd grade teachers	\$18,116.48	31
001	1100	111	0000	000000	006	03	000	Salary - 3rd grade teachers	\$25,791.65	37
001	1100	111	0000	000000	006	04	000	Salary - 4th grade teachers	\$10,325.06	20
001	1100	111	0000	000000	006	05	000	Salary - 5th grade teachers	\$7,000.56	13
001	1100	111	0000	000000	006	06	000	Salary - 6th grade teachers	\$20,708.43	51
001	1100	111	0000	000000	006	14	000	Salary - Kdg. Teachers	\$25,046.43	70
001	1100	111	0000	020000	006	00	000	Salary - Art Teachers	\$8,668.43	45
001	2700	141	0000	000000	004	00	000	Salary - Custodians	\$21,608.00	54
001	2810	141	0000	000000	006	00	000	Salary - Mechanic	\$17,161.00	78
572	1270	111	9099	000000	000	00	000	Salary - Title I Grant	\$0.00	0

www.mcoecn.org

Done Open Notebook


USAS Web - New Invoice - Mozilla Firefox

File Edit View History Bookmarks Tools Help

Back Forward Reload Stop Home

http://devel.ssdtnwoca.org/usasweb/invoicePOFor

Google

 **USAS - Junit County Schools**

Invoices Go

Home Logout

- Home
- Accounts
 - New Budget
 - Query Budgets
 - New Revenue
 - Query Revenues
- AP Invoices
 - New
 - Query
- Checks
- Configuration
- Purchase Orders
 - New
 - Query
 - Load
- Receipts
- Refunds
- Requisitions
- Vendors

- Admin
- Utilities
- Help
- Logout

New AP Invoice

Purchase Order # :

Defaults to last PO number

Done www.mcoecn.org Open Notebook

USAS Web - Invoice Query - Mozilla Firefox

File Edit View History Bookmarks Tools Help

Back Forward Reload Stop Home

http://devel.ssdt.nwoca.org/usasweb/invoiceQuery Google

USAS - Junit County Sch

Invoices

Functions

Find Clear Use * as a wildcard to represent any character in fields flagged with *

Invoice Query			
Starting Purchase Order #:	<input type="text" value="0"/>	Ending Purchase Order #:	<input type="text" value="0"/>
Invoice #:	<input type="text" value=""/> *	Vendor #:	<input type="text" value="0"/>
Starting Invoice #:	<input type="text"/>	Ending Invoice #:	<input type="text"/>
Starting Invoice Date:	<input type="text"/> (mm/dd/yyyy)	Ending Invoice Date:	<input type="text"/> (mm/dd/yyyy)
Starting Payment Due Date:	<input type="text"/> (mm/dd/yyyy)	Ending Payment Due Date:	<input type="text"/> (mm/dd/yyyy)
Starting Posted Date:	<input type="text"/> (mm/dd/yyyy)	Ending Posted Date:	<input type="text"/> (mm/dd/yyyy)
Posted By Username:	<input type="text"/>	Maximum Invoices Displayed:	<input type="text" value="50"/>

Expanded Queries

Done Open Notebook

USAS Web - Vendor Query - Mozilla Firefox

File Edit View History Bookmarks Tools Help

Back Forward Reload Stop Home

http://devel.ssd.t.nwoca.org/usasweb/vendorQuer

Google

SSD USAS - Junit County Schools

Vendors [] [] Go

Home Logout

Home
 Accounts
 New Budget
 Query Budgets
 New Revenue
 Query Revenues
 AP Invoices
 New
 Query
 Checks
 Query
 Configuration
 Purchase Orders
 New
 Query
 Load
 Receipts
 New
 Query
 Load
 Refunds
 New
 Query
 Load
 Requisitions
 New
 Query

Functions

Find Clear

Use * as a wildcard to represent any character in fields flagged with *

Vendor Query

Search: *School* By Name Sounds Like

Starting Vendor #: 0 Ending Vendor #: []

Status: Active Maximum Vendors Displayed: 50

Number	Name	Phone	Address	City	State	Zip
1003	Southwest High School		1140 Sycamore	Sampleville	OH	55555

Future: Brief query options or...

Done

www.mcoecn.org

Open Notebook

USAS Web - Vendor Query - Mozilla Firefox

File Edit View History Bookmarks Tools Help

Back Forward Reload Stop Home

http://devel.ssdtnwoca.org/usasweb/vendorQuer

Google

USAS - Junit County Schools

Go

Logout

Functions

Find Clear

Use * as a wildcard to represent any character in fields flagged with *

Vendor Query

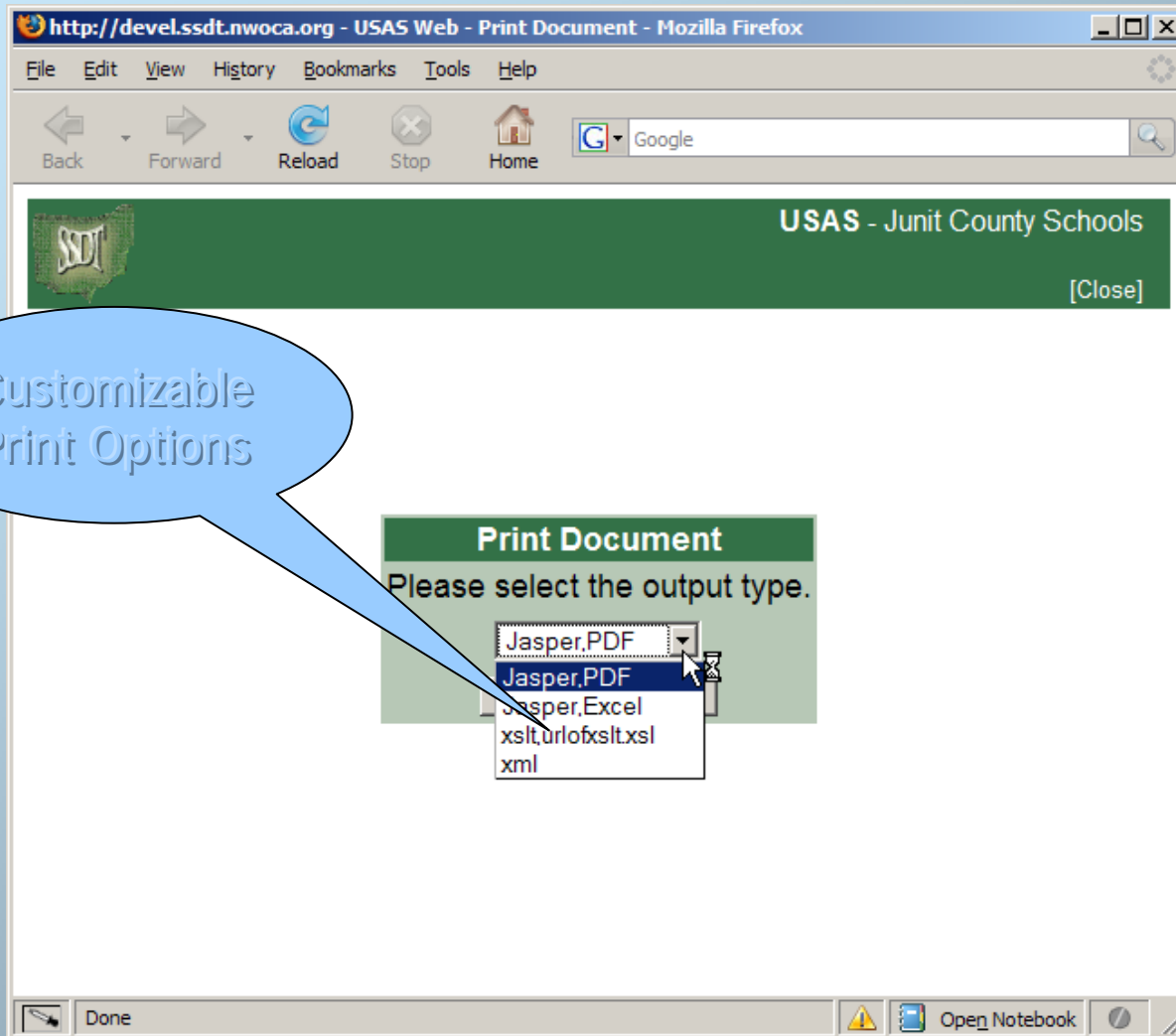
Search: *School* * By Name Sounds Like

Starting Vendor # :	<input type="text" value="0"/>	Ending Vendor # :	<input type="text" value="0"/>
Address:	<input type="text"/>	City:	<input type="text"/>
State:	<input type="text"/>	Zip:	<input type="text"/>
Phone:	<input type="text"/>	Category:	<input type="text"/>
Starting Last Activity Date:	<input type="text"/> (mm/dd/yyyy)	Ending Last Activity Date:	<input type="text"/> (mm/dd/yyyy)
Starting Fiscal YTD Total:	<input type="text" value="0"/>	Ending Fiscal YTD Total:	<input type="text" value="0"/>
Starting YTD Total:	<input type="text" value="0"/>	Ending YTD Total:	<input type="text" value="0"/>
Status:	Active	Maximum Vendors Displayed:	50

Number Name Phone Address City State Zip

Done Open Notebook

...Expanded query options



Customizable
Print Options

 **USAS - Junit County Schools**

Home Logout

- Home
- Accounts
 - New Budget
 - Query Budgets
 - New Revenue
 - Query Revenues
- AP Invoices
 - New
 - Query
- Checks
 - Query
- Configuration
 - New Preferences
 - Show Preferences
 - Query Preferences
- Purchase Orders
 - New
 - Query
 - Load
- Receipts
 - New
 - Query
 - Load
- Refunds
 - New
 - Query
 - Load
- Requisitions
 - New
 - Query

User Preferences

New Modify Delete

Requisition & Purchase Order Options			
User Name	SMITH		
Default Deliver-to Vendor	1000	Sampleville Hardware	
Delete Req or Set Posted	To_Posted	Purchase Order Date Default	Today
Use User highest Requisition	User	Use District/User highest PO	District
User highest Requisition#	DJS0005	User highest PO#	0
Always use highest Req#	Yes	Always use highest PO#	No

User Options
(OPTSCN)

USAS Web - Query User Preferences - Mozilla Firefox

File Edit View History Bookmarks Tools Help

Back Forward Reload Stop Home

http://devel.ssdn.nwoca.org/usasweb/userPrefsQt

Google

- Home
- Accounts
 - New Budget
 - Query Budgets
 - New Revenue
 - Query Revenues
- AP Invoices
 - New
 - Query
- Checks
 - Query
- Configuration
 - New Preferences
 - Show Preferences
 - Query Preferences
- Purchase Orders
 - New
 - Query
 - Load
- Receipts
 - New
 - Query
 - Load
- Refunds
 - New

Functions

Find Clear

User Preferences Query

User Name :

User Name

- BECHER
- Cindy
- DIEMER
- FRANCIS
- JUNIT
- SMITH
- SPONGEBOB
- TEST\TEST006
- TEST\TEST300
- TEST\TESTUSER

Done

Open Notebook

Modifiable by Group Manager


USASDW Web - Cash Account Query - Mozilla Firefox

File Edit View History Bookmarks Tools Help

Back Forward Reload Stop Home

http://devel.ssd.t.nwoca.org/usasdw/accountCash

Google



Cash Account Query

Description:

Fund: SCC:

Status:

Enter any combination of fields for the wildcard search fields is to enter. You may use '%' as a wildcard. For example, '%abc%' would select all records containing 'abc'. You may select a specific status. Your results.

5 items found, displaying all items. 1

Fund	SCC	Description	July 1 Cash Balance	FYTD Receipts	FYTD Expenditures
001	0000	GENERAL FUND	48,129.22	17,361.86	1,...
007	0000	SEC. 125 MEDICAL REIMBURS...	3,115.68	5,902.65	6,...
007	9001	PROJECT DISCOVERY	0.00	0.00	
007	9002	NBEC MEMBER MEDICAL EXPEN...	0.00	0.00	
007	9003	OECN SUBSIDY DISTRIBUTION...	7,068.14	14,267,011.12	

Export Options: [CSV](#) | [Excel](#) | [Tab-Delimited](#)

Open Notebook

New Look for SSWAT.
Now called "USAS
DW"

USPS Web - Attendance Mass Add - Mozilla Firefox

File Edit View History Bookmarks Tools Help

Back Forward Reload Stop Home

http://devel.ssdn.nwoca.org/uspsweb/attendance1

Google

Home Portal Logout

Emp. ID Job Category Sub Cat. Length Unit Appt. Type Sub. ID

888888989 01 Absence Sick

Daily

Hide Calendar

< MAY 2007 >

Include Weekends?
 No Yes

Friday	Saturday	Sunday	Monday	Tuesday	Wednesday	Thursday
			1	2	3	4
			false	false	false	false
6	7	8	9	10	11	12
false	true	true	true	true	true	false
13	14	15	16	17	18	19
false	false	false	false	false	false	false

"Mass Add"
Attendance

Optional Calendar:
Click or Drag to
Select

USPS Web - Emis Detail - Mozilla Firefox

File Edit View History Bookmarks Tools Help

Back Forward Reload Stop Home

http://devel.ssd.t.nwoca.org/uspsweb/emisDetail.c

Google

EMIS Entry Screen

Modify Expand All Collapse All

Id	SSN	Last Name	First Name	Middle	Suffix
888888989	888888989	CHILDS	JULIA	M	

Employee Fields

Emis Id

Credential Id

Report to EMIS Yes

Gender Female

Total Years Authorized Years 0

Attendance Days 0.00

Absence Days 0.00

Degree Type

Semester 0

Hours ECE

Qualification

Other Credentials

Race

Long Term Illness 0.00

Birth Date 01/28/1935

Job 1 HEAD COOK

Report to EMIS Yes

Position Code 904

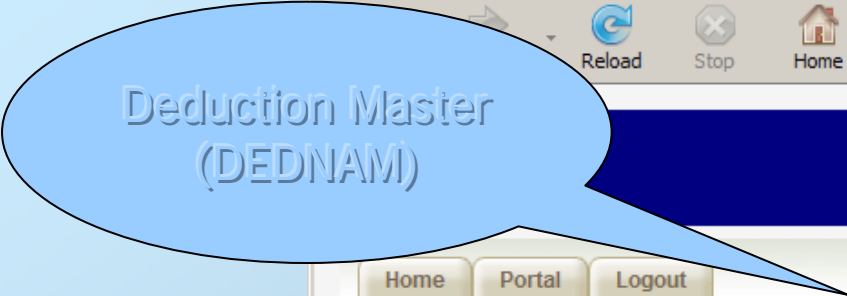
Position Type

Position Status

Position Start Date 08/01/2002

Appointment Type

"EMIS Only" Screen
Just fields reportable to EMIS.



Home Portal Logout

- Home
- Employee
 - New
 - Query
- Jobs
 - New
 - Query
- Employee Date
- Attendance
 - New
 - Quick Entry
 - Mass Add
 - Query
- Benefit
 - View
 - Add/Modify
- EMIS Entry Screen
- Configuration
 - New Date Code
 - Query Date Code
 - New Deduction
 - Query Deductions
- Utilities
- Admin
- Help
- Logout

Deduction Master Query

Search Clear

Deduction Type:

Deduction Code	Type	Name	Pay To Name
001	Federal	MID AM	Julie DiCesare
002	Ohio	TREASURER OF STATE OF OHIO	
003	City	VILLAGE OF HOLLYWOOD	HOLLYWOOD-DEPT. OF TAXATION
004	City	CITY OF STARS INC TAX	
005	City	Deduction Test	PeeWee Herman
006	City	Emerald City - Income Tax	
007	City	Village of Dwarves	Clerk/Treasurer
008	City		
009	City		
010	City		
390	State	State of Michigan	
400	SERS	SCHOOL EMPLOYEES RETIREMENT SY	
450	STRS	STATE TEACHERS RETIREMENT SYS	
500	Annuity	Aid Assn. for Leprachauns	
501	Annuity	Athena Financial Services	
502	Annuity	City Life Insurance Co.	
503	Annuity	Enterprise Financial Services	

www.mcoecn.org

USPS Web - Deduction Detail - Mozilla Firefox

File Edit View History Bookmarks Tools Help

Back Forward Reload Stop Home

http://devel.ssd.t.nwoca.org/uspsweb/deductionDt

Google

- Home
- Employee
 - New
 - Query
- Jobs
 - New
 - Query
- Employee Date
- Attendance
 - New
 - Quick Entry
 - Mass Add
 - Query
- Benefit
 - View
 - Add/Modify
- EMIS Entry Screen
- Configuration
 - New Date Code
 - Query Date Code
 - New Deduction
 - Query Deductions
- Utilities
- Admin
- Help
- Logout

Deduction Master Details

Modify Add Delete Return to Query

Deduction Master Detail

FEDERAL

Code Abbreviation

Name W2Abbreviat

On Payded/Dedrpt Print

Pay To Information

Pay To Name Phone Number Fax Number

2nd Pay To Name

Street Address Payment Cycle

2nd Street Address

City Electronic Remittance Yes

State

Zip Code

Other Information

Vendor

Exempt Annuities

www.mcoecn.org

- Jobs
 - New
 - Query
- Employee Date
- Attendance
 - New
 - Quick Entry
 - Mass Add
 - Query
- Benefit
 - View
 - Add/Modify
- EMIS Entry Screen
- Configuration
 - New Date Code
 - Query Date Code
 - New Deduction
 - Query Deductions
- Utilities
- Admin
- Help
- Logout

Deduction Master Detail

ANNUITY

Code	<input type="text" value="502"/>	Abbreviation	<input type="text" value="CityLife"/>
Name	<input type="text" value="City Life Insurance Co."/>	W2Abbreviation	<input type="text"/>
On Payded/Dedprnt	<input type="text" value="SSN"/>	Required	<input type="text" value="Not Required"/>

Pay To Information

Pay To Name	<input type="text"/>	Phone	<input type="text"/>
2nd Pay To Name	<input type="text"/>	Number	<input type="text"/>
Street Address	<input type="text" value="P.O. Box 23123"/>	Fax Number	<input type="text"/>
2nd Street Address	<input type="text"/>	Payment	<input type="text" value="EveryPayroll"/>
City	<input type="text" value="Big Apple"/>	Cycle	<input type="text"/>
State	<input type="text" value="NY"/>	Electronic	<input type="text" value="No"/>
Zip Code	<input type="text" value="234232323"/>	Remittance	<input type="text"/>

Other Information

Vendor	<input type="text" value="0"/>
Print Board Amounts	<input type="text" value="No"/>
Cert. Object Code	<input type="text"/>
Class. Object Code	<input type="text"/>
Other Object Code	<input type="text"/>
Annuity Type	<input type="text" value="Type-403B"/>
ACH Transfer Type	<input type="text"/>
ACH Transfer Id	<input type="text"/>

Questions?

